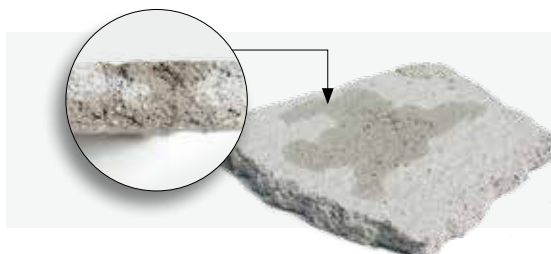


# Technical data sheet

## NOVOMUR®

### Dehumidifying Thermo Acoustic Plaster



FOR:

**INTERNAL - EXTERNAL USE**

V. 1.0 Rev. 25\_07\_2025



### General Description

**NOVOMUR** is a dehumidifying base plaster that also provides thermal acoustic insulation. **NOVOMUR** is suitable for both internal and external applications.

**NOVOMUR** can be used to improve the thermal resistance of masonry, and therefore provide thermal insulation, by applying at least a 2 cm layer. **NOVOMUR** is comparable to a wool coat due to its excellent breathability and low thermal conductivity values (see technical data).

**Note:** In presence of rising dampness, remove existing plaster only up to the height effected by the dampness, there is no need to remove the plaster beyond this level.

**NOVOMUR** is made with high-quality natural thermal aggregates, first-grade cork granules, and cement-based binder.

add one 0.14 litre bottles of additive (**ADDITIVO AFON CASA**) for each 10kg bag.(see preparation procedures).

**NOVOMUR** is directly applied to the surface of the masonry. Once completely dried, it must be finished exclusively with **RASANTERMO SPUGNABILE** finishing coat.

### Warranty

In addition to the legal warranty, the product is covered by a Product Liability Insurance Policy with a primary Italian insurance company.

### Supply Formats:

10 Kg bag + one 0.14 lt bottle of ADDITIVE (**ADDITIVO AFON CASA**).

### Application Instructions

**NOVOMUR** is used as a base plaster for old and new masonry, ceilings, etc. Its properties ensure excellent performance and long-lasting durability even in the presence of moisture.

**NOTE; IN CASE OF RISING DAMPNESS, REMOVE EXISTING PLASTER UP TO THE HIGHEST POINT EFFECTED BY THE DAMPNESS.**

**PROFESSIONAL USE ONLY**

## Surface Preparation

Pay particular attention to the surfaces that need to be treated, especially existing stone masonry. Complete removal of the old plaster is recommended in the affected areas, followed by cleaning and washing of the surfaces to eliminate any residual dust. For masonry with depressions or cavities larger than 3 cm, it is advisable to fill and level the surface using hydrated lime or a lime-based binder mixed with coarse sand (avoid using NHL 3.5 hydraulic lime). In the case of hygroscopic substrates that tend to absorb a lot of moisture, apply a preliminary, highly fluid scratch coat, of the open type, made with sand and cement.

## Lavorazione

**NOVOMUR** can be applied on any type of masonry in a single coat up to approximately 2 cm in thickness. For greater thicknesses, the plaster must be applied in multiple coats, and additional layers can be added after 24 hours. The procedure is as follows:

1. Set up guides using the same material, metal bars or wooden strips, secure them with quick-setting cement and remove them the following day.
2. Apply the product manually using a trowel, placing large amounts side by side, and cutting off excess material to ensure uniform application. Avoid pressing the plaster to avoid breaking the air cells within the mix.
3. Avoid applying the mortar over a large surface all at once. It is preferable to work in sections of about 70–80 cm at a time. During the initial setting/curing stage the roughcast should not be thickened because the air cells that have formed are not able to support a new layer of mortar if the previous one has not hardened. Avoid using a float to smooth the surface.
4. Level the surface with a metal straightedge, moving it slowly in a zigzag motion from the bottom upward. If, after leveling, some areas are still below the desired thickness, proceed carefully when adding more mortar (otherwise, the entire layer could detach). You can then use a wooden straightedge to roughen the surface, preparing it to receive the **RASANTERMO SPUGNABILE** finishing coat (see technical data sheet).
5. For medium thicknesses of 2–3cm, apply the finishing coat after 48 hours. For thicker layers of 4–7cm, wait 5–6 days. Avoid applying **NOVOMUR** at low temperatures.
6. The thermal finishing layer must then be painted with **PITTURA CALCARICA AFON CASA** or **ALFEA CALCE** (lime paint) for interior use or with **PITTURA AI SILICATI DI POTASSIO AFON CASA** (Potassium silicate paint) for exterior use.

## Warnings and Mixing Instructions

- It cannot be applied by spraying;
- Do not apply at temperatures below 5°C;
- If **NOVOMUR** is applied in spaces without adequate ventilation, a mechanical ventilation system must be installed;
- Pay particular attention to the mixing procedure. We recommend proceeding as follows:

### In a 70-liter mixer:

Pour 5.5 liters of water + one 0.14 lt. bottle of **AFON CASA Additive (ADDITIVO AFON CASA)** into the mixer, start the mixer, and then add one 10 kg bag of **NOVOMUR**.

### In a 150-liter mixer:

Pour 17 liters of water + three 0.14 lt. bottles of **AFON CASA Additive (ADDITIVO AFON CASA)** into the mixer, start the mixer, and then add three 10 kg bags of **NOVOMUR**.

### In a 300-liter mixer:

Pour 34 liters of water + six 0.14 lt. bottles of **AFON CASA Additive (ADDITIVO AFON CASA)** into the mixer, start the mixer, and then add six 10 kg bags of **NOVOMUR**.

- Allow the mixer to run for 5–7 minutes. **WARNING:** Once the mixture is ready, switch off the mixer.

**NOTE:** To ensure the proper preparation of the dough, we recommend mixing the number of bags specified above, based on the size of the mixer. Before processing, consult the safety data sheet. The operator is required to wear appropriate work clothing, including masks, gloves, and goggles.



Watch the video  
on youtube



## Mixing procedure with Electric Mixer:

In a Mixing container suitable for containing 10 KG of pre-mixed material, pour 5.5 kg of Water and one 0.14 lt bottle of **ADDITIVE** for **NOVOMUR**. Before adding the **NOVOMUR**, mix water and additive well.

Equip yourself with a mixer fitted with a spiral dough hook that has adjustable speed settings.

Set the mixer to the lowest speed.

Proceed by adding 1/2 bag of **NOVOMUR** at a time.

Add water until the mixture appears homogeneous and soft.

Continue mixing for a few minutes until it is clear that the mass is expanding..

**WARNING:** Always keep the mixer speed at the minimum to avoid compromising the integrity of the mixture. **NOVOMUR** develops air pockets that must grow by trapping air; too high a rotational speed can break these pockets and invalidate the effectiveness of the plaster.

Once ready, let the mixture rest for 5/6 minutes.

Proceed with application.

## Storage

Store in dry conditions for no longer than 12 months.

## Technical Data

|   |   |
|---|---|
| THERMAL CONDUCTIVITY                        | $\lambda = 0,052 \text{ W/mK}$              |
| VAPOR DIFFUSION RESISTANCE                  | $\mu=5$                                     |
| SPECIFIC WEIGHT                             | 150 Kg/m <sup>2</sup>                       |
| SPECIFIC HEAT                               | 1000 J/KgK                                  |
| APPROXIMATE COVERAGE                        | 5 kg/m <sup>2</sup> (thickness 1 cm)        |
| PACKAGING                                   | 10 kg bags                                  |
| FIRE REACTION                               | A1  |
| VAPOR TRANSMISSION RATE                     | 370 g/day/m <sup>2</sup> (thickness 2.5 cm) |
| SOUND REDUCTION                             | 13 dB (thickness 3 cm)                      |
| FLEXURAL STRENGTH                           | 1.66 N/mm <sup>2</sup>                      |
| COMPRESSIVE STRENGTH                        | 3.24 N/mm <sup>2</sup>                      |
| WATER ABSORPTION COEFFICIENT BY CAPILLARITY | 0.19 Kg/m <sup>2</sup> min. <sup>0.5</sup>  |
| DIRECT TENSILE ADHESION                     | 0.517 N/mm <sup>2</sup>                     |

## Specification Clause

FOR INDOOR AND OUTDOOR USE TO DEHUMIDIFY, INCREASE THERMAL INSULATION, OR IMPROVE ACOUSTIC PERFORMANCE OF WALLS..

Execution of **NOVOMUR** base plaster, with thermal conductivity of 0.052 W/mK, sound-absorbing properties, and dehumidifying capabilities, after complete removal of existing plaster down to the bare masonry and thorough washing.

Apply exclusively by hand using a trowel, after mixing according to instructions and following the application procedures provided by **AFON CASA**. Plaster the entire surface to be treated until reaching a minimum thickness of 2 cm is achieved. For greater thicknesses, apply each additional layer after 24 hours without using plaster-reinforcing mesh

*The data provided refers to laboratory tests; in practical on-site applications, these may be significantly altered depending on installation conditions. The user must verify the product's suitability for the intended use and assumes full responsibility for any consequences arising from its application. Always refer to the updated technical data sheet downloadable from [www.afoncasa.it](http://www.afoncasa.it)*